

# Papakura District Crime Report

Q1 2026



## What is the NSPD?

Neighbourhood Support is a nationwide community-led movement that brings people and neighbourhoods together to create safe, resilient, and connected communities. We believe that a well-connected community helps to improve safety, resilience, and wellbeing for all.

The Neighbourhood Support Papakura District (NSPD) is the primary branch for the Papakura area. To learn more, visit our [website](#) and [Facebook page](#).



## What is this Report?

The NSPD receives a weekly offences report from Police Headquarters in Wellington, which contains property offences for Counties/Manukau. The report contains information such as time, day, street, and descriptions of offences. We select the non-commercial property offences reported to the Papakura Police Station and present the data in an easy-to-understand format.\* Our goal is to achieve three outcomes:

### Our Reporting Goals

- 1** [To identify crime trends district-wide.](#) By understanding the rates and types of crime, all District residents can deploy their resources to make their best efforts to bring down crime rates.
- 2** [To identify crime trends for specific neighbourhoods.](#) With accurate information, neighbourhoods can take specific actions to reverse crime trends.
- 3** [To combat misinformation.](#) Social media often exaggerates crime statistics. By publishing accurate crime statistics, we hope to fight against false claims and mischaracterisations around crime and give residents accurate information to help make their own security decisions.

\*All data within the Wellington report is given under strict protocols and can't be shared wholesale. Only NSPD personnel who have been police vetted can access the raw data from the report.

# Q4 2025 vs Q1 2026 Offences

**Table A** shows total number of non-commercial property offences reported for the Papakura District for Q4 2025 and Q1 of 2026.

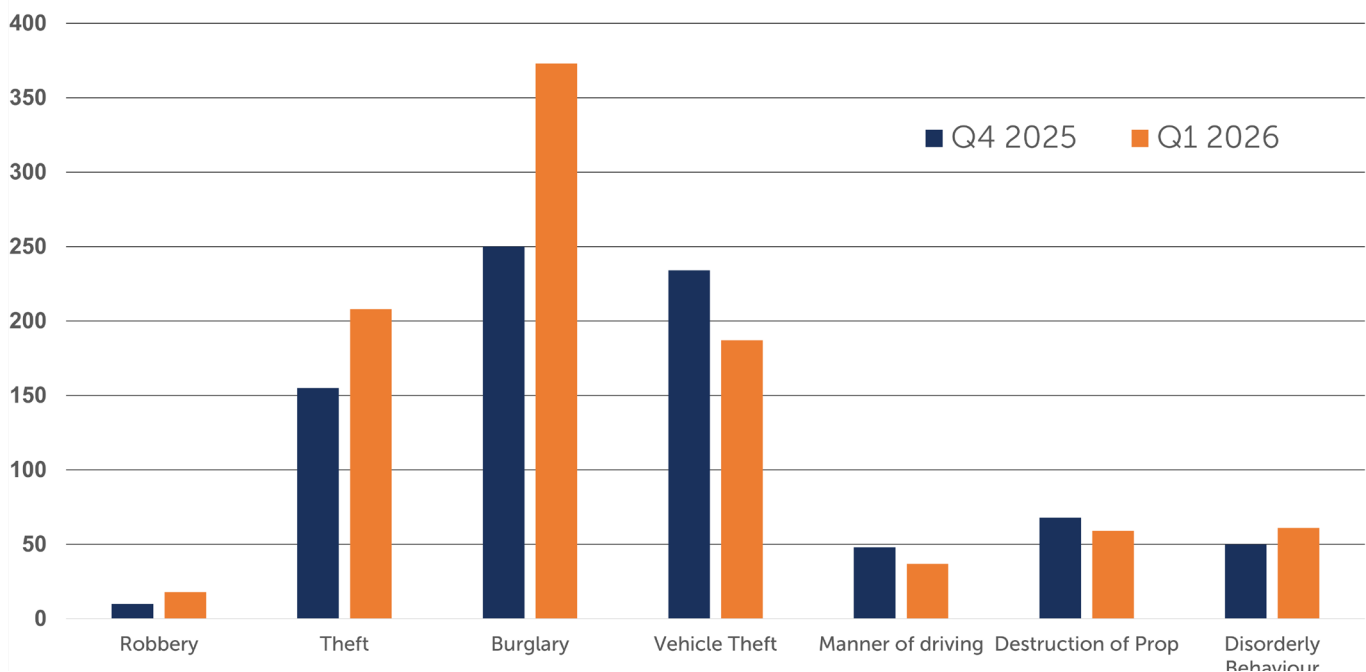
Quarter	Robbery	Theft	Burglary	Vehicle Theft*	Manner of Driving	Wilful Damage	Disorderly Behaviour	Other	Total
<b>Q4</b>	10	155	250	234	48	68	50	7	<b>815</b>
<b>Q1</b>	18	208	373	187	37	59	61	27	<b>943</b>

**\*Vehicle Theft**— Involves an intention or act of taking or borrowing a vehicle without consent. It does not include theft FROM a vehicle. (see "Crime Types, Pg 2). Vehicle Theft also include motorcycles, scooters and bicycles.

**Graph A** shows total number of non-commercial property offences reported for the Papakura District for Q4 2025 and Q1 of 2026. Does not include "Other" category.

## Graph A

Papakura District Non-Commercial Property Offences

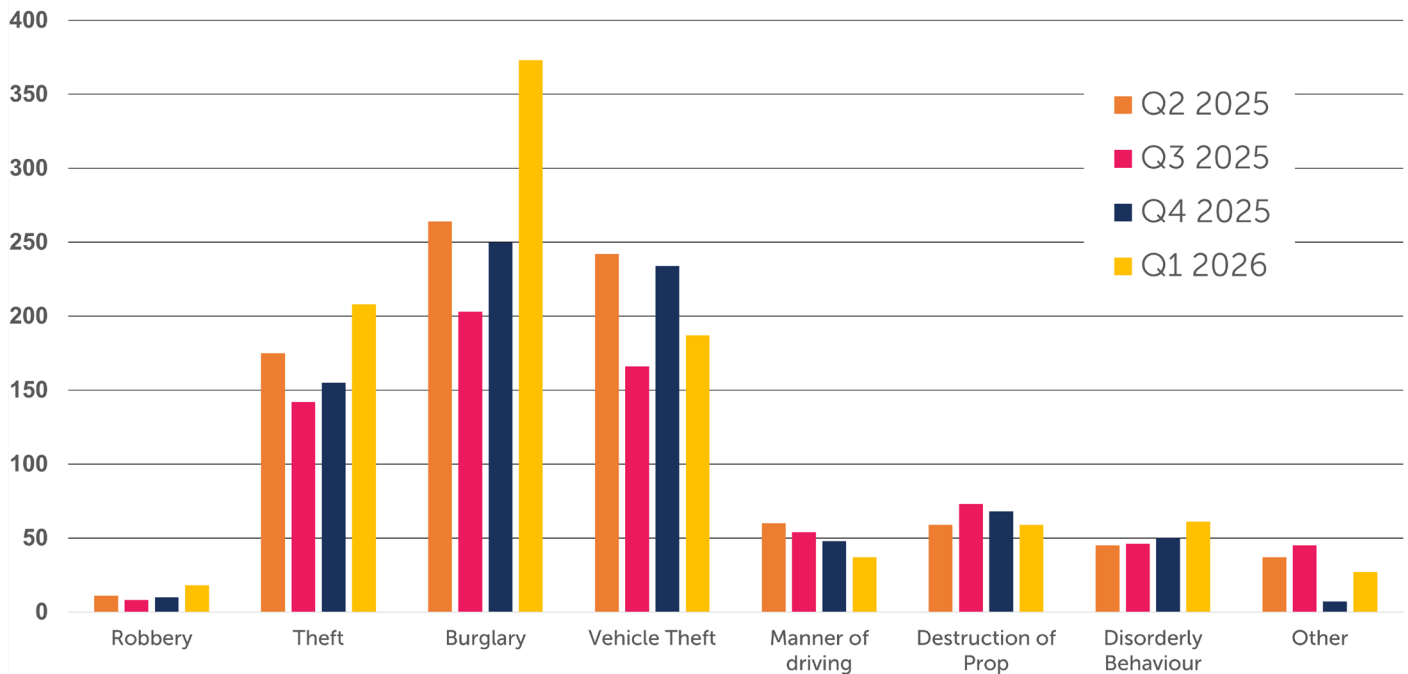


# Non Commercial Property Offences (12 mos)

**Graph B** compares total number of non-commercial property offences reported for the Papakura District for the last four quarters (12 months).

**Graph B**

Non-Commercial Property Offences (12 Months)

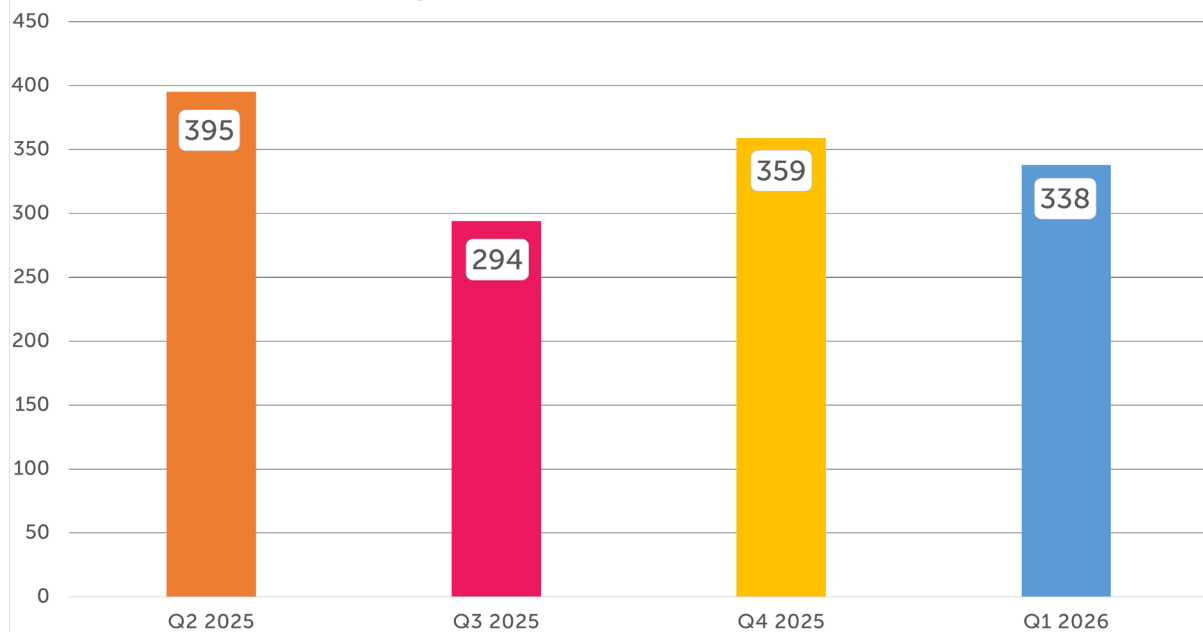


# Car/Driving Related Offences

**Graph C** compares total number of car and driving-related crimes reported for the Papakura District for the last four quarters (12 months). Offences include traffic violations like speeding and car theft/conversion.

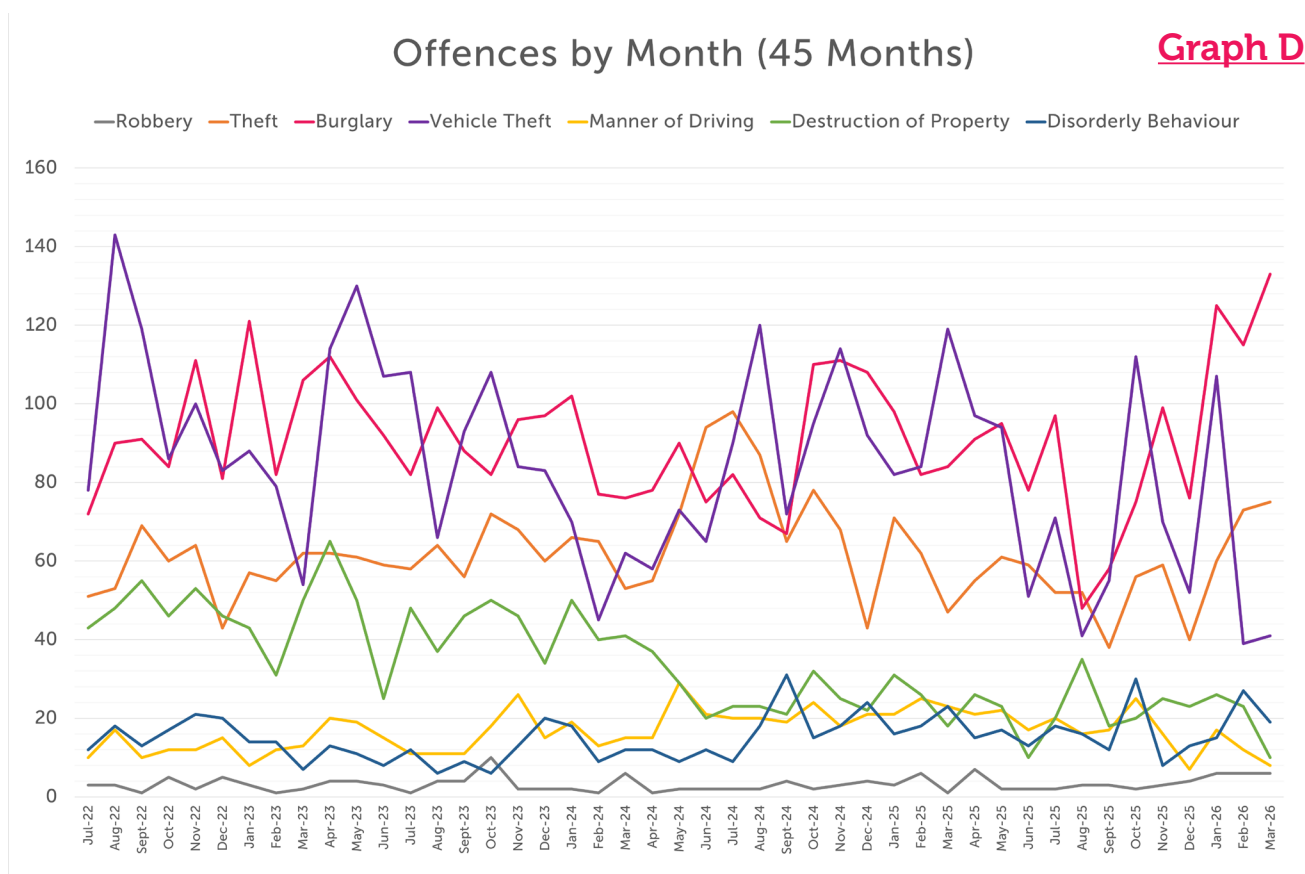
**Graph C**

Car/Driving Related Offences (12 Months)

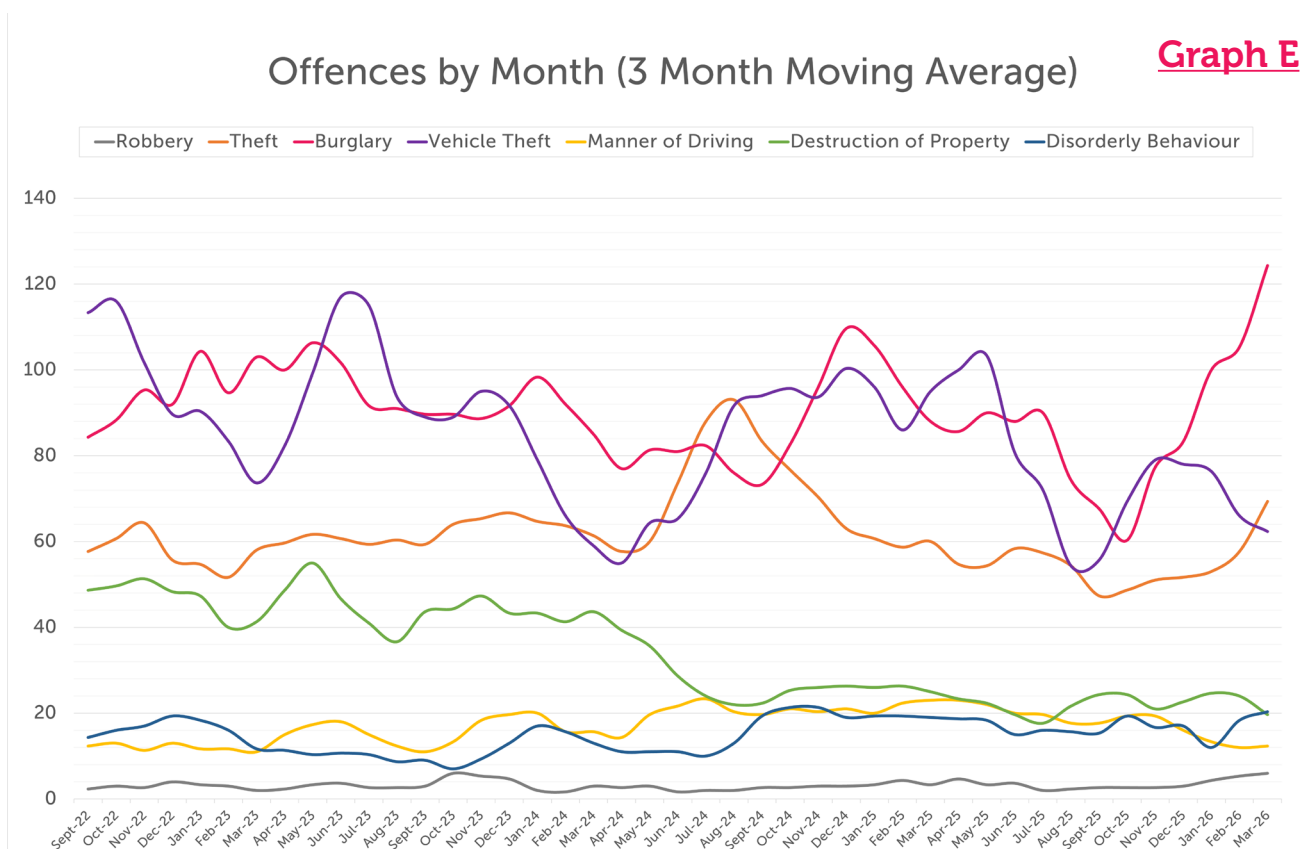


# Offences by Month (45 Months)

**Graph D** shows monthly totals for all non-commercial property crimes for each category for the last 42 months.



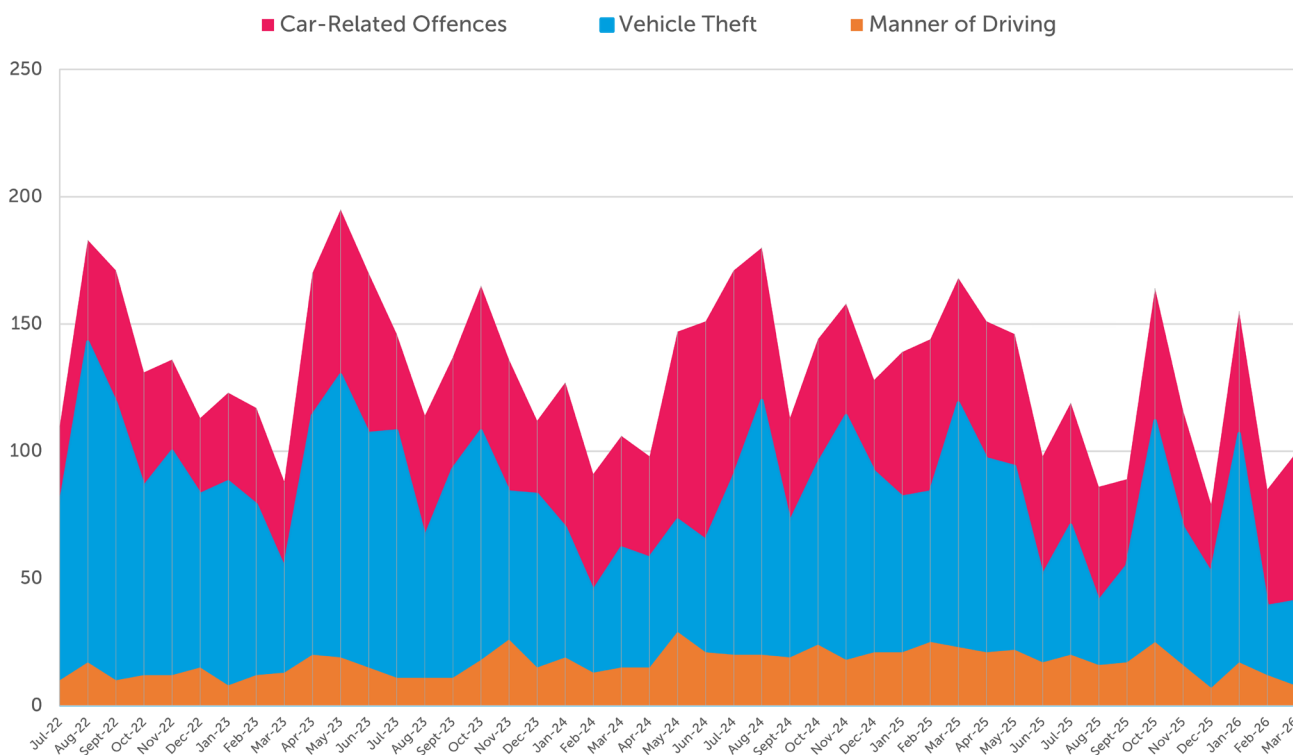
**Graph E** shows a three month moving average of all non-commercial property crimes for each category beginning with the first full quarter of 2022. The chart smooths out short-term fluctuations and highlights longer-term trends in the data.



**Graph F** Compares Vehicle Theft & Manner of Driving rates to the total number of Car-Related offences for the last two years. Vehicle Theft follows a similar trend line to the total and makes up a significant portion of the total car-related offenses.

Total Car-Related Offences by Month (45 months)

**Graph F**



## Do your part. Report Crime.

Crimes that aren't reported, don't get counted. To keep crime stats accurate, it's important we all report crimes regardless of the likely outcome. Having the attitude of "The police can't or won't do anything" only ensures your crime isn't part of the database, which police use to identify "hotspots" and curtail overall offences. You never know, your reporting might help prevent a crime from happening to your neighbour.

### Reporting a Burglary:

Dial 111 if a crime is happening.

Dial 105 if the crime has happened.

Or report online at [police.govt.nz/use-105](https://police.govt.nz/use-105).



# Crime Trends Analysis

Data covered: All conclusions in this analysis is based on the last 45 months (July 2022 to March 2026).

This summary reviews almost four years of police-recorded crime data for the Papakura district – 45 months from July 2022 to March 2026 across seven offence categories. It is intended to give residents a clear, factual picture of how crime patterns are shifting, when offences tend to peak through the year, and what that means for everyday awareness in our neighbourhoods.

A quick note on the data: these figures represent offences that were reported to and recorded by Police. Changes in numbers can reflect real changes in offending, but they can also reflect changes in how often people report crimes, or shifts in policing operations. With that in mind, here is what the data shows.

## The Big Picture

Across the 45 months we examined, total recorded crime in these seven categories has gently trended downward. The second half of the period averaged about 8% fewer offences a month than the first half. But that headline hides a more nuanced story:

- Two large categories have fallen substantially – vehicle theft and wilful damage.
- Three smaller categories have crept upwards – manner of driving, disorderly behaviour, and robbery.
- Burglary and theft – our two highest-volume categories – have been broadly stable for most of the period, but burglary in particular has risen sharply in the first three months of 2026.
- The seven categories are explained one at a time below.

## Burglary

The trend: Stable for most of the period, but climbing in early 2026.

Burglary is consistently the largest single category of recorded crime in Papakura, typically running at 80 to 100 offences a month. The first three months of 2026 have been notably higher: 125 in January, 115 in February, and 133 in March – the highest single month in the dataset. Q1 2026, with 373 burglaries in total, is the highest first quarter on record for our data set.

**When burglary peaks:** January and November are consistently the worst months of the year. Both are linked to households being away — January falls in the summer school holidays when many families travel, and November is the run-up to Christmas, when homes are often empty during work and shopping hours. The quietest months are August and September, when residents are home more and days are shorter.

**For residents:** Even in a normal year, late spring and summer call for extra care. Locking up before short trips, securing rear doors and windows, and visible deterrents like lighting, alarms, or cameras all make a difference. Asking a neighbour to keep an eye on the property when you're away is one of the most effective steps you can take.

## Theft

**The trend:** A clear long-term decline, with an unusual drop in early 2026.

Vehicle theft has been falling for several years. The peak in our data was August 2022, with 143 vehicles taken in a single month. By 2024 and 2025 the typical month had dropped into the high 70s to mid 80s. Early 2026 produced an unusual pattern: 107 vehicle thefts in January, but just 39 in February and 41 in March. That February figure is the lowest in the entire dataset.

**When vehicle theft peaks:** Spring — October especially — and late autumn — May — are historically the highest months. February has long been the quietest. Some of the recent drop fits the seasonal pattern, but the size of it is unusual.

**For residents:** The multi-year decline is genuinely good news, but vigilance still matters. Don't leave keys near exterior doors (modern thieves use signal-relay devices on keyless cars), park in well-lit areas where possible, and consider a steering lock or after-market immobiliser on older models, which remain the most frequently targeted.

## Willful Damage (Destruction of Property)

**The trend:** The most positive story in the data.

In late 2022 and early 2023, Papakura was averaging 45 to 55 wilful-damage offences a month — graffiti, smashed windows, deliberate damage to property and vehicles. By 2024 the typical month had dropped into the low 30s. Through 2025 and into 2026 the typical month is around 20, and March 2026 recorded just 10 incidents — equal to the lowest figure on record.

**When wilful damage peaks:** April — the first school holidays of the year — and September through November — spring — are the highest months historically. Cold, wet winter evenings tend to be the quietest.

**For residents:** Whatever combination of factors is behind this decline — better lighting, environmental design, community programmes, shifting youth behaviour — it is working. Continuing to report damage when it happens helps maintain the momentum.

## Disorderly Behaviour

**The trend:** Slowly rising, and closely tied to the social calendar.

Disorderly behaviour — including fighting in public, obscene language and similar offences — has gradually climbed from around 12 to 14 a month in 2022 and 2023 to roughly 17 to 20 a month in 2024 and 2025. This is still a relatively small category. Even at its peak it represents about 4% of all recorded offences in the district.

**When disorderly behaviour peaks:** December is the highest month on average, with secondary peaks in October and February. The pattern fits warm-weather gatherings, holiday-period drinking, and end-of-year events. Winter — June through August — is the quietest.

**For residents:** Most disorderly-behaviour incidents happen in or around licensed venues and public spaces in the evening. Awareness of surroundings and avoiding known flashpoint areas late at night remain the most practical steps.

## Manner of Driving

**The trend:** Climbed through 2024 and 2025, then dropped sharply in early 2026.

Manner-of-driving offences cover careless driving, dangerous driving, excessive speed, and similar charges. From 2022 through early 2024 they typically ran at 10 to 15 a month. Through mid-2024 and 2025 they climbed into the 18 to 25 range. Q1 2026, with 37 offences in total, is the lowest first quarter on record.

This category is particularly sensitive to enforcement activity — the numbers respond strongly to whether police are actively running road-policing operations. Movements in this category should be read with that in mind.

**When manner-of-driving peaks:** May and October — both linked to darker, wetter commutes and long-weekend traffic.

**For residents:** This is the category where individual drivers can make a big difference. Slowing down in school zones, leaving extra following distance in wet conditions, and avoiding distractions are the basics that prevent serious harm.

## Robbery

**The trend:** Rare in Papakura, but rising in early 2026.

Robbery — taking property from a person using force or the threat of force — is by far the smallest category in the data. Most months see between 1 and 5 robberies. October 2023 was the single highest month, with 10. Q1 2026 recorded 18 robberies, the highest first quarter on record and roughly double the average for prior years.

Because each robbery involves direct violence or threat against a person, even a modest numerical rise carries real weight for the community.

**When robbery peaks:** The numbers are small enough that seasonal patterns are hard to read with confidence, though October stands out historically.

**For residents:** Robbery is rare in Papakura and remains so even with the recent rise. Standard awareness — particularly around evening trips to ATMs, dairies, and service stations — is sensible.

## What this all means for Papakura

Putting the picture in plain terms:

- Crime against homes and against people has risen in early 2026. Burglary and robbery are at multi-year highs for a first quarter.
- Property damage has fallen substantially. This is the most positive trend in the data.
- Vehicle-related crime is mixed. Generally improving year on year, with an unusually quiet February and March 2026 that is worth continuing to monitor.
- Total recorded crime across the seven categories has gradually drifted down since 2022.

Most categories follow predictable seasonal patterns that residents can plan around. Burglary peaks in summer, when homes are empty. Theft from vehicles climbs in winter, when bags get left in cars. Disorderly behaviour rises through December. Knowing these patterns is part of being a resilient community.

## Quick Tips Through the Year

- November to January (summer): Lock up carefully when you're away. Arrange for a neighbour or trusted friend to check on your home. Don't let deliveries pile up at the door.
- April to May (autumn): Slow down on darker, wetter commutes. Take extra care in school zones.
- June to August (winter): Don't leave bags or devices visible in your car, even for a quick stop. Use the boot, not the back seat.
- September to October (spring): Keep an eye on outdoor property — vehicle theft and disorderly behaviour both pick up. Make sure outdoor lighting is working.
- All year round: Report what you see. The patterns in this report exist because someone reported the offence. Patterns only become visible when reporting is consistent.

## What can I do?

You can take actions now that will help lower your (and your neighbour's) risk of being a target of crime. Here are some online resources and tips. You can find many more on the Neighbourhood Support New Zealand [website](#).

[Protecting Your Home](#)

[Improving Your Neighbourhood](#)

[Vehicle Safety & Security](#)

[Community Cams FAQs](#)

[Preventing Fraud and Scams](#)

[Preventing Mail Theft](#)

## Join NSPD

Neighbourhood Support is FREE to join and offers lots of benefits:

- Have opportunities to connect with those around you.
- Receive emails with what's happening in your community.
- Get tips to improve the safety of your home and your community.
- Learn how to get prepared for emergencies.
- Be invited to attend community events organised by Neighbourhood Support.



By staying connected and supporting each other, we can make our neighbourhoods safe and welcoming for all. Want to join the NSPD? Visit our [sign up page](#) or email us at [nspapakura@gmail.com](mailto:nspapakura@gmail.com)

## Community Connection and Safety (CRN)

Crime data shows that connected neighbourhoods are safer neighbourhoods. Many offences in Papakura—such as burglary and vehicle crime—are influenced by opportunity, particularly during holidays and warmer months when routines change. Streets where neighbours know each other tend to have higher awareness, quicker reporting, and fewer opportunities for crime.

The Community Resilience Network (CRN) supports this through [Street Meets](#)—simple, informal gatherings that help neighbours connect, share local safety information, and look out for one another. Strong community connections don't just build resilience; they actively help reduce crime. Learn more about Street Meets and how to get involved at the [CRN website](#).



Papakura  
**COMMUNITY RESILIENCE  
NETWORK**

# Crime Types

The NSPD Crime Report covers offences from the following eight crime categories. Understanding them and their differences will help you better interpret the data presented in the Crime Report. We've combined and simplified these categories so they are more easily understandable by the public. We also list common examples of offence types we use to define each category.



**Robbery**— Robbery is the unlawful taking of another person's property with the intent to permanently deprive them of it. Robbery involves the use of force, threats, intimidation, or violence against the owner or another person present. In essence, it is a theft that is committed with force. Examples: Any offence description that contains the term: "ROBBERY", "ROBS", "AGGRAVATED ROBBERY", "OTHER ROBBERY".

**Theft**— Theft is the unlawful taking of another person's property with the intent to permanently deprive them of it. In theft cases, the perpetrator takes the property without the owner's consent. Note: many of the offences in the Theft category include theft *from* a vehicle, as opposed to taking the vehicle itself. These are covered under "Vehicle Theft" (see below). Any offence description that contains the term: "THEFT".

**Burglary**— Is committed by anyone who enters any building, or part of a building, without authority and with intent to commit any offence that could lead to imprisonment. Any offence description that contains the terms "BURGLES" or "BURGLARY".

**Vehicle theft**— Involves an intention or act of taking or borrowing a vehicle without consent. It does not include theft **FROM** a vehicle. (see "Theft" above). Example offences: "UNLAWFUL TAKES MOTOR VEHICLES", "UNLAWFUL INTERFERES MOTOR VEHICLES", "ATTEMPTED UNLAWFUL TAKING OF A MOTOR VEHICLE", "POSSESS INSTRUMENTS FOR CONVERSION".

**Manner of driving**— Driving a vehicle in a reckless or unsafe manner. Example offences: "SPECIAL VEHICLE LANE", "CARELESS DRIVING", "UNSAFE PASSING", "UNSAFE CHANGING OF LANES", "FOLLOWED TOO CLOSE"

**Destruction of property (Wilful Damage)**—Intentional or reckless damage to or destruction of property. Example offences: "WILFULLY DAMAGE", "GRAFFITI", "INTENTIONAL DAMAGE" or "ARSON".

**Disorderly behaviour**—Socially unacceptable behaviour in a public place, or within hearing or view of a public place. Example offences: "DISPLAY GANG INSIGNIA", "FIGHTING", "SET OFF FIREWORKS IN PUBLIC PLACE", "INSULTING LANGUAGE", "RESIST POLICE".

**Car—Related Offences**—We define this category broadly as any offence that directly or indirectly involves a vehicle, bicycle, boat, etc. Example: "FOLLOWED TOO CLOSE", "UNLAWFUL TAKES MOTOR VEHICLES", "THEFT EX VEHICLE".